

Boulevard[®]

User Guide



Britax

Table of Contents

Safety Information

WARNINGS.....	2
Important Notes.....	4
Certification.....	5
Registration.....	5
Weight Range/Maximum Height.....	6

Installation: Aircraft.....	7
------------------------------------	----------

Features

Front View.....	8
Rear View.....	9

Vehicle Compatibility

Vehicle Safety Belts.....	10
Vehicle Seating Positions.....	11
Vehicle Buckle Position.....	11

Installation: Rear Facing

LATCH Installation.....	12
Lap/Shoulder Belt Installation.....	14
Lap-Belt Installation.....	16

Installation: Forward Facing

LATCH Installation.....	18
Lap/Shoulder Belt Installation.....	20
Lap-Belt Installation.....	22

Installation: Versa-Tether®

Safety Information.....	23
Using the Versa-Tether.....	24
Rear-Facing Tether Connector Strap.....	25
Energy-Absorbing Tether.....	26

Restraint Functions

Switching the LATCH Connector.....	27
Storing the LATCH Connector.....	28
Recline Adjustment.....	28
Infant Body Pillow.....	28
Chest Clip.....	29
HUGS™ and Comfort Pads.....	29
Harness Buckle.....	30
Harness Height.....	30

Securing Your Child.....	31
---------------------------------	-----------

Care and Maintenance.....	33
----------------------------------	-----------

Warranty.....	37
----------------------	-----------



WARNING!

DEATH or SERIOUS INJURY can occur:

- Infants should remain in a rear-facing child restraint for as long as possible. The American Academy of Pediatrics and Britax recommends rear facing until at least 1 year of age **and** 20 pounds.
- Use only with children who weigh between 5 and 65 pounds (2.3 and 29 kg.) and whose height is 49 inches (124 cm.) or less. Use rear facing for children 5–33 pounds (2.3–15 kg.) and forward facing to a maximum of 65 pounds (29 kg.).
- Adjust the belts provided with this child restraint so they fit snugly around your child. A snug strap should not allow any slack. It lies in a relatively straight line without sagging. It does not press on the child's flesh or push the child's body into an unnatural position.
- Secure the top anchorage strap provided with this child restraint.
- Secure this child restraint with vehicle's child restraint anchorage system if available or with a vehicle belt.
- Follow all instructions on this child restraint and in the written instructions.
- Register your child restraint with the manufacturer.
- Use vehicle belt (not LATCH connectors) for installations with children weighing more than 48 pounds (21 kg.). Refer to your vehicle's owner's manual or contact the vehicle manufacturer for maximum weight rating for their LATCH anchors. Unless specified otherwise by vehicle manufacturer, assume a 48-pound child is vehicle LATCH anchor limit.
- HUGS™ pads **must** be used in forward-facing mode. Removal of HUGS pads is optional for rear-facing mode.

- Register your child restraint with the manufacturer, Britax Child Safety, Inc.
- This child restraint must not be used in the home, in boats, or other non-certified applications.
- Based on crash statistics, the National Highway Traffic Safety Administration recommends that parents select the back seat as the safest location for a properly installed child restraint. Please study the *Vehicle Safety Belts* section in this booklet to ensure your child's safety. If in doubt about installing child restraint, consult your vehicle's owner's manual.
- Secure this child restraint even when it is not occupied. In a crash, an unsecured child restraint may injure vehicle occupants.
- When using in a vehicle with air bags, refer to your vehicle's owner's manual for child restraint installation instructions and precautions.
- Restraint must be in the full upright position when installed in forward-facing mode with children who weigh more than 33 pounds (15 kg.).
- Never use adjuster strap to lift or carry this child restraint. Doing so could cause damage to harness adjuster and webbing. Always carry this child restraint by its shell or tether straps.
- The primary protection for occupants of a vehicle in a collision is the body of the vehicle itself; a child restraint will not protect a child when a vehicle is seriously impacted. However, correctly installed, a child restraint will substantially improve chances for survival in most crashes.

Important Notes

- Verify child restraint is secure and harness is properly adjusted around child each time child restraint is used.
- Adjust harness to fit clothes the child is wearing. Remove bulky coats and/or jackets before putting child in restraint.
- Cover restraint when vehicle is parked in direct sunlight. Parts of child restraint could become hot enough to burn a child.
- Store child restraint in a safe place when it is not being used. Avoid placing heavy objects on top of it.
- To prevent injury due to deterioration or hidden damage, discontinue use of a child restraint that is older than six years or has been in a severe crash. See date of manufacture located on restraint.
- Do not leave children alone in a vehicle, even for a short time.
- Do not, except as described in this booklet, attempt to disassemble any part of the child restraint or change the way its harness or vehicle's restraint belts are used.
- Do not leave loose objects, e.g. books, bags, etc., in the back of a vehicle. In the event of a sudden stop, loose objects will keep moving, potentially causing serious injuries.
- Do not leave folding vehicle seats unlatched. In event of a sudden stop, a loose seat back could prevent child restraint from protecting the child as well as it should.
- Do not allow children to play with this or any child restraint.
- Do not use anything to raise restraint off vehicle seat except as described in these instructions. In a crash, restraint could slide and may not protect the child as well as it should.

Certification

This child restraint system conforms to all applicable Federal Motor Vehicle Safety Standards. **This restraint is certified for use in motor vehicles and aircraft.**

Registration

Child restraints could be recalled for safety reasons. You must register this restraint to be reached in a recall. Send your name, address, and the restraint's model number and manufacturing date to Britax Child Safety, Inc., 13501 South Ridge Drive Charlotte, NC 28273, or call 1-888-4BRITAX, or register online at www.BritaxUSA.com. For recall information, call the U.S. Government's Vehicle Safety Hotline at 1-888-327-4236 (TTY 1-800-424-9153), or go to <http://www.NHTSA.gov>.



WARNING! DO NOT place a child restraint in the front seat of a vehicle with a passenger air bag. DEATH or SERIOUS INJURY can occur. The back seat is the safest place for children under 12.

Weight Range

Rear-Facing

Weight 5-33 pounds (2.3-15 kg).

Forward-Facing

Weight 20 pounds (and 1 year) - 65 pounds (9-29 kg.)

Maximum Height

Rear-Facing

The child is too tall when the top of the head is 1 inch from the top of the restraint.

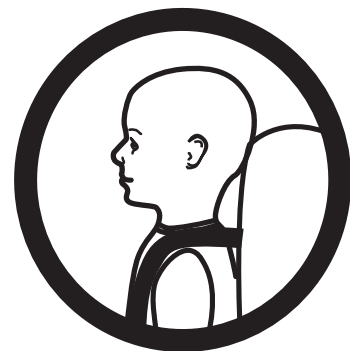


Rear-Facing

Forward-Facing

Use of the seat should be discontinued when any of the following occurs:

- The top of the ears are above the top of the restraint
- The top harness slots fall below the child's shoulders
- The child exceeds the weight capacity of the seat



Forward - Facing

Aircraft Installation



Certified for
Aircraft Travel

This child restraint is certified for aircraft use. Most airlines in the U.S. and Canada will allow use of a child restraint if it is labeled as an approved child restraint for airline use and fits properly on plane. Contact the airline about their policy prior to traveling.

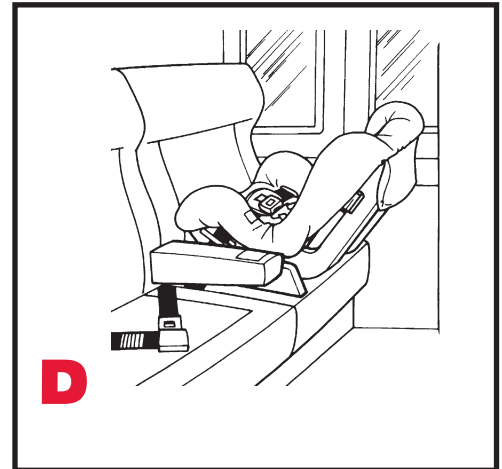
- *The FAA recommends that a child weighing up to 40 pounds use a certified, harnessed child restraint while traveling on an aircraft.*
- *Install your child restraint in a window seat to avoid blocking the aisle.*
- *If the aircraft lap belt is too short, ask the flight attendant for a belt extender.*

Rear-Facing Installation

For rear-facing aircraft installation (fig. D), follow Rear-Facing Lap-Belt Installation instructions on pages 14–15.

Forward-Facing Installation

For forward-facing aircraft installation (fig. E), follow Forward-Facing Lap-Belt Installation instructions on page 20.



Features



- | | |
|----------------------------|---|
| 1 Cover | 11 Chest Clip |
| 2 Headrest Adjustment Knob | 12 HUGS™ (Harness Ultra Guard System) Shoulder Pads |
| 3 LATCH Bar | 13 Harness |
| 4 LATCH Adjuster | 14 Harness Buckle |
| 5 LATCH Release Button | 15 Belly Pad |
| 6 LATCH Connector | 16 Harness Adjuster Lever (under flap) |
| 7 Headrest | 17 Harness Adjuster Strap |
| 8 Harness Slots | 18 Recline Handle |
| 9 Comfort Pads | |
| 10 Infant Body Pillow | |



- 19 Forward-Facing Lock-Off
- 20 Rear-Facing Lock-Off
- 21 Base
- 22 Versa-Tether® Adjuster
and Hook (inside pouch)
- 23 Belt Guard

IMPORTANT: When not in use, this user guide should be stored under the cover. DO NOT discard foam inserts found under the cover.



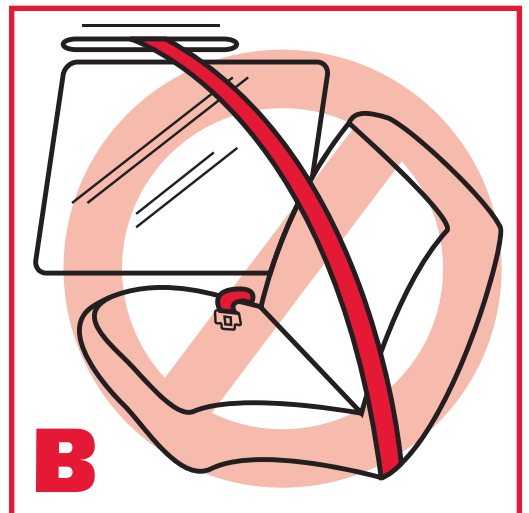
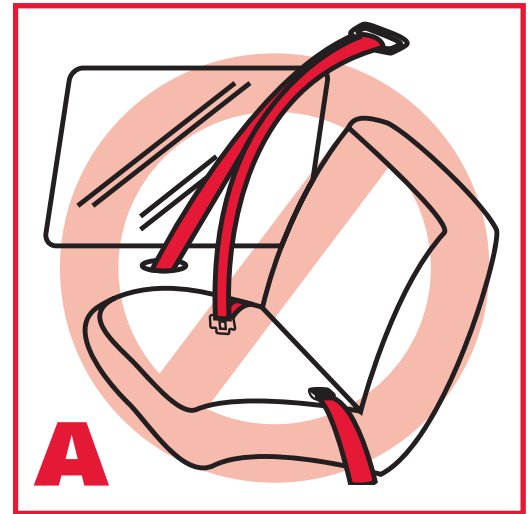
Vehicle Safety Belts

NOTE: The information in this section only applies to installation with vehicle safety belts.

IMPORTANT: Vehicle seats and safety belts differ from vehicle to vehicle. Refer to your vehicle's owner's manual for specific information about vehicle safety belts and their use with child restraints. Some vehicles have no seating positions which are compatible with this child restraint or any other child restraint. If in doubt, contact the vehicle manufacturer for assistance.

This child restraint can fit securely in most vehicles using existing vehicle belts. However, some vehicle designs prevent a secure fit of the child restraint due to position of the vehicle belt lower anchorage points.

The owner's manual for your vehicle will have information on the types of vehicle belts in your vehicle. If your belt type is listed below, select another seating position or use Lower Anchors and Tethers for Children (LATCH) connectors.



The following types of vehicle belts are **not** compatible with this child restraint:

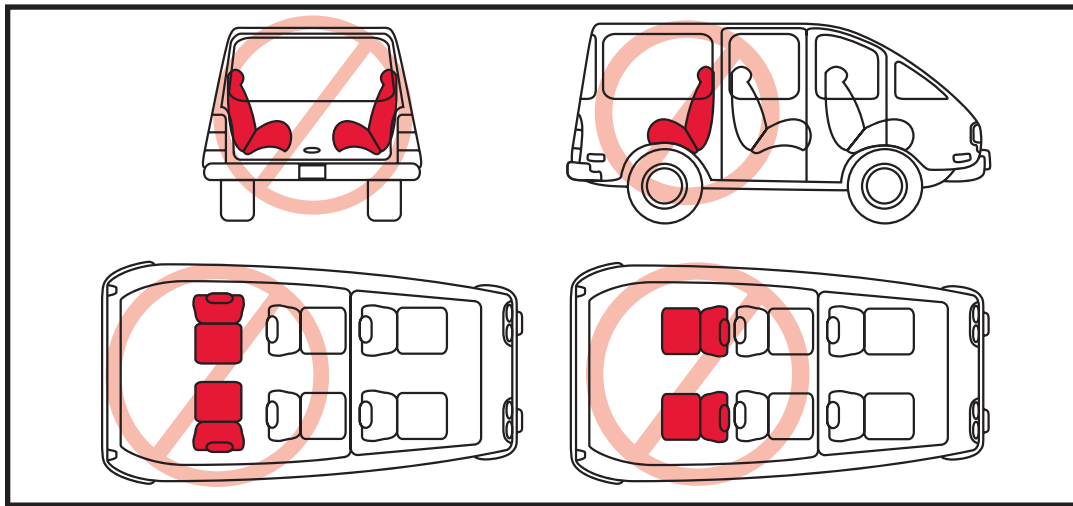
- ✗ Front vehicle belts with top or bottom anchorage points in the door. (Fig. A)
- ✗ Motor-driven, automatic vehicle belts. (Fig. B)
- ✗ Lap-shoulder belts that have separate retractors for shoulder section and lap section in which lap section retractor does not lock.
- ✗ Non-locking, two-point Emergency Locking Retractor (ELR) vehicle belts.
- ✗ Lap-shoulder ELR vehicle belts without use of the lock-off.

NOTE: Refer to your vehicle's owner's manual to determine the kind of retractors used in your vehicle and how to operate them.

Vehicle Seating Positions



WARNING! Forward-facing vehicle seats **MUST** be used with this child restraint. Side-facing or rear-facing seats **CAN-NOT** be used. See diagram below.



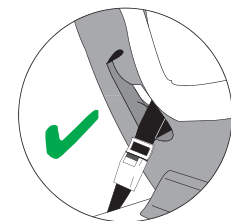
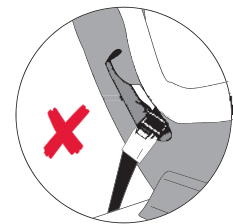
Vehicle Buckle Position



WARNING! The position of vehicle belt buckle can affect stability of the child restraint. In a crash, an improperly positioned buckle could become loose and the child would be unprotected.

If buckle lies near position marked as wrong (✗) when vehicle belt is tightened, try fitting child restraint in another seating position in vehicle.

If it is not possible to achieve correct position (✓) for buckle, another seating position **MUST** be used.



Installation: Rear Facing

LATCH Installation

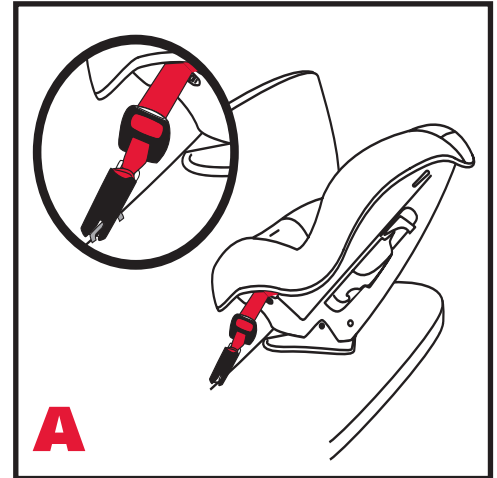
- Figure A illustrates a typical rear-facing LATCH installation.
- Verify that your vehicle is equipped with LATCH anchors. If LATCH anchors are not available, you must use vehicle belt installation methods.

NOTE: LATCH connectors must be in an upright position (as shown in figure B) and strap should be tight and not twisted to ensure proper installation.

- 1 If stored, remove LATCH connectors from storage slots under cover (see page 28).
- 2 Press and hold first LATCH adjuster button, then pull LATCH strap to full length. Repeat for remaining LATCH connector.
- 3 Fully recline restraint then place it sideways on vehicle seat with front facing toward you.
- 4 Verify LATCH strap is not twisted, then attach closest LATCH connector to vehicle seat back to farthest LATCH anchor from you (fig. C).

NOTE: It may be necessary to switch LATCH connectors as shown on page 27 if **ANY** of the following conditions exist:

- LATCH connector is not in an upright position as shown in figure B.
 - LATCH strap is twisted.
 - A positive click is NOT heard when LATCH connector and LATCH anchor are connected.
 - ✦ **NOTE:** If a positive click is not heard, but LATCH connector is in an upright position, you should not switch LATCH connector. The strap may be too tight or twisted, or there may be debris in LATCH connector.
- 5 Rotate seat into rear-facing position.
 - 6 Verify LATCH strap is not twisted, then attach remaining LATCH connector to adjacent LATCH anchor (fig. D).



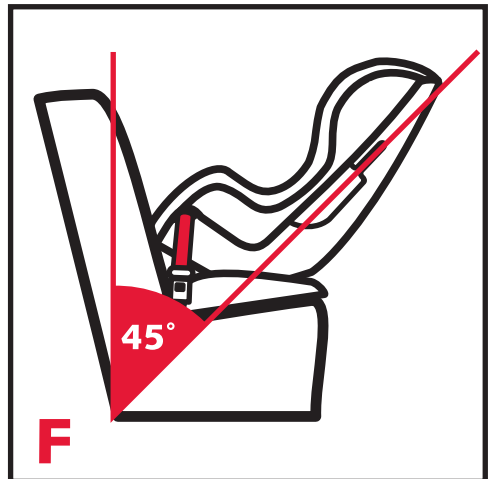
- 7 Push child restraint firmly into vehicle seat while pulling each LATCH strap tight (fig. E).
- 8 Verify all connections are secure and that restraint is stable. The restraint is secure when it cannot be moved front-to-back or side-to-side more than 1" (2.5 cm.) at belt path. If restraint is not secure, repeat procedure or use an alternate seating location.
 - Britax recommends use of the Versa-Tether® to improve installation. See pages 23-26.
 - The back angle of the child restraint should be 30°-45° from vertical (not to exceed 45° from vertical) when car is parked on a level surface (fig. F).
 - The proper recline angle can be achieved by placing a rolled towel or pool noodle in crease of vehicle seat to help level child restraint's base.
 - If there is a problem stabilizing restraint, tighten tether as described on page 24 using anchor point 3.



WARNING! Do not raise restraint off front edge of vehicle seat. Doing so will reduce protection for your child and may damage recline adjustment.

Removal

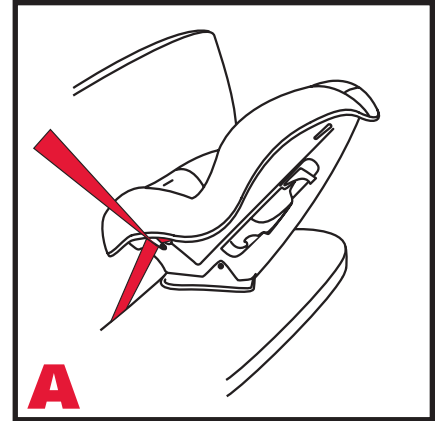
Disconnect the Versa-Tether from tether anchor, if attached. While pushing the restraint firmly into the vehicle seat, press the red release buttons on the LATCH connectors to release. When not in use, always store the LATCH connectors and Versa-Tether.



Installation: Rear Facing

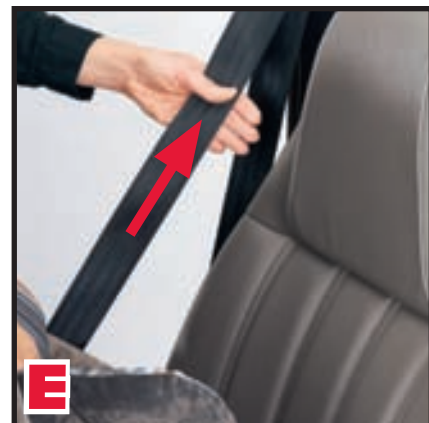
Lap/Shoulder Belt Installation

- Figure A illustrates a typical rear-facing, lap/shoulder belt installation.
 - When not in use, always store LATCH connectors in storage slots. (see page 28).
- 1 Fully recline restraint then place it rear facing on vehicle seat.
 - 2 Lift cover to open rear-facing lock-off farthest from where vehicle belt will be buckled (fig. B).
 - 3 Pull vehicle belt out then pass it through farthest rear-facing belt slot from where vehicle belt will be buckled (fig. C).
 - Vehicle belt can be routed over or under cover.
 - 4 Route vehicle belt across seat then through second rear-facing belt slot.
 - 5 Verify vehicle belt is not twisted, then buckle (fig. D).
 - 6 Push restraint firmly into seat while removing slack first from the lap portion of vehicle belt, then shoulder portion (fig. E).
 - 7 Lift cover to access lock-off farthest from vehicle buckle. Position both sections of vehicle belt through lock-off, tighten belt, close lock-off arm (fig. F) and replace cover.
 - Lock-off is properly closed when a click is heard.
 - To prevent breakage, never extend lock-off arm beyond its natural open position and always keep lock-off closed when not in use.
 - If your vehicle is equipped with an automatic locking retractor (ALR), use of lock-offs is not required as long as ALR is activated. Check your vehicle's owner's manual to determine type of retractor your vehicle has, and for proper use of retractor.

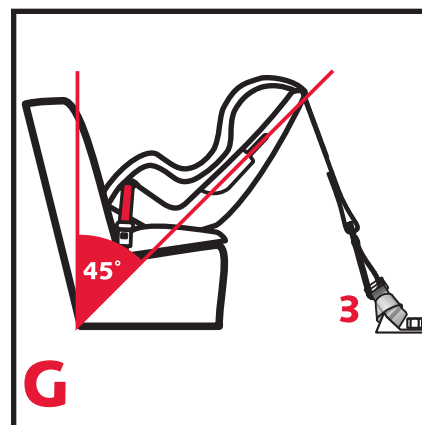


8 Verify all connections are secure and that restraint is stable. The restraint is secure when it cannot be moved front-to-back or side-to-side more than 1" (2.5 cm.) at belt path. If the restraint is not secure, repeat procedure or use an alternate seating location.

- *Britax recommends use of the Versa-Tether® to improve installation. See pages 23-26.*
- *The back angle of the child restraint should be 30°-45° from vertical (not to exceed 45° from vertical) when car is parked on a level surface (fig. G).*
- *The proper recline angle can be achieved by placing a rolled towel or pool noodle in crease of vehicle seat to help level child restraint's base.*
- *If there is a problem stabilizing restraint, tighten tether as described on page 24 using anchor point 3.*



WARNING! Do not raise restraint off front edge of vehicle seat. Doing so will reduce protection for your child and may damage recline adjustment.



Removal

Disconnect the Versa-Tether from tether anchor, if attached. While pushing the restraint firmly into the vehicle seat, release the lock-off and vehicle belt.

Installation: Rear Facing

Lap-Belt Installation

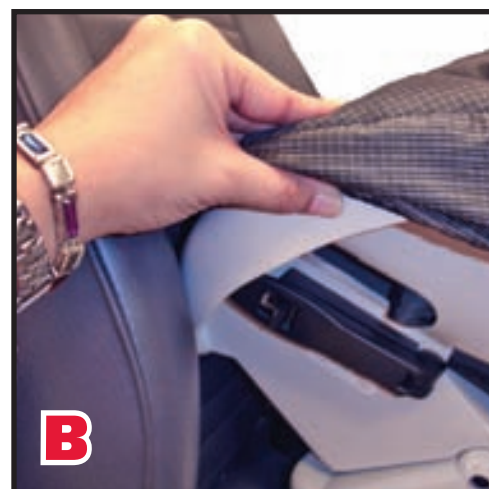
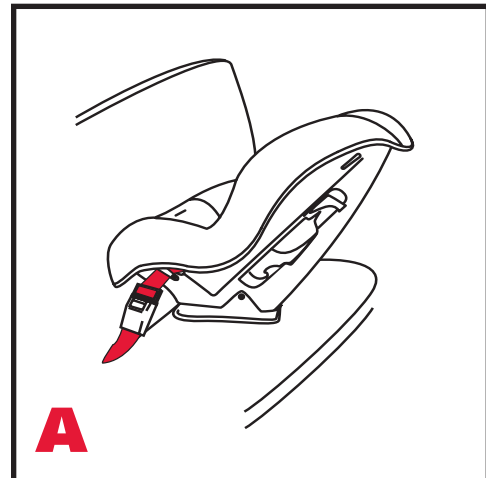
- Figure A illustrates a typical rear-facing, lap-belt installation.
- When not in use, always store LATCH connectors in storage slots. (See page 28).



WARNING!

Do not install with non-locking (ELR), 2-point vehicle belt.

- 1 Fully recline restraint, then place it rear facing on vehicle seat.
- 2 Lift cover and open rear-facing lock-off farthest from where vehicle belt will be buckled. (fig. B)
- 3 Pull vehicle belt out, then pass it through farthest rear-facing belt slot from where vehicle belt will be buckled (fig. C).
 - The vehicle belt can be routed over or under restraint cover.
- 4 Route vehicle belt across restraint seat then through second rear-facing belt slot.
- 5 Verify vehicle belt is not twisted, then buckle (fig. D).
- 6 Push child restraint firmly into vehicle seat while removing slack from vehicle belt.
- 7 Position vehicle belt through lock-off arm (fig. E), tighten belt, close lock-off arm and replace cover.
 - Lock-off is properly closed when a click is heard.
 - To prevent breakage, never extend lock-off arm beyond its natural open position and always keep lock-off closed when not in use.



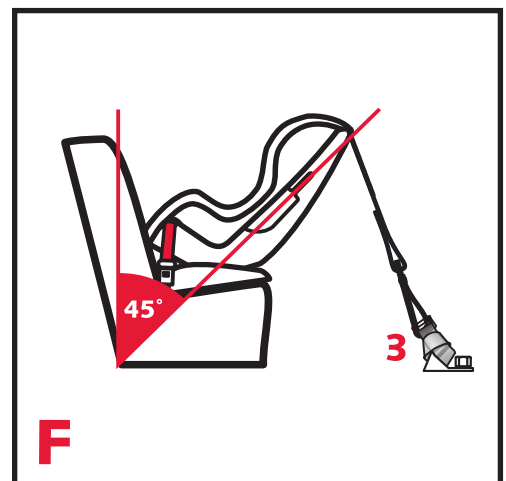
- If your vehicle is equipped with an automatic locking retractor (ALR), use of lock-offs is not required as long as ALR is activated. Check your vehicle's owner's manual to determine type of retractor your vehicle has, and for proper use of retractor.
- 8 Verify all connections are secure and that restraint is stable. The restraint is secure when it cannot be moved front-to-back or side-to-side more than 1" (2.5 cm.) at belt path. If the restraint is not secure, repeat procedure or use an alternate seating location.
- Britax recommends use of the Versa-Tether® to improve installation. See pages 23-26.
 - The back angle of the child restraint should be 30°-45° from vertical (not to exceed 45° from vertical) when car is parked on a level surface (fig. F).
 - The proper recline angle can be achieved by placing a rolled towel or pool noodle in crease of vehicle seat to help level child restraint's base.
 - If there is a problem stabilizing restraint, tighten tether as described on page 24 using anchor point 3.



WARNING! Do not raise restraint off front edge of vehicle seat. Doing so will reduce protection for your child and may damage recline adjustment.

Removal

Disconnect the Versa-Tether, if necessary. While pushing the restraint firmly into the vehicle seat, release the lock-off and vehicle belt.



Installation: Forward Facing

LATCH Installation

- Figure A illustrates a typical forward-facing LATCH installation.
- Verify that your vehicle is equipped with LATCH anchors. If LATCH anchors are not available, you must use vehicle belt installation methods.

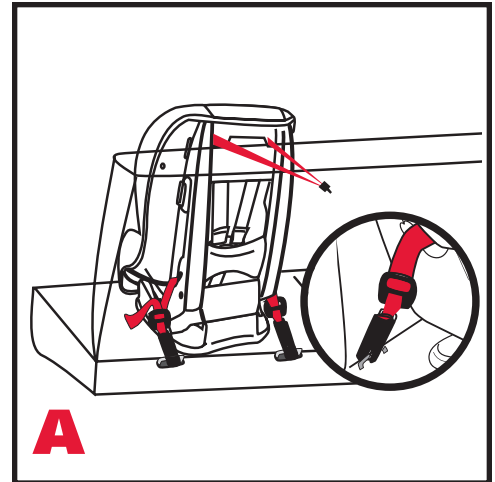
NOTE: LATCH connectors must be in an upright position (as shown in figure B) and strap should be tight and not twisted to ensure proper installation.

- 1 If stored, remove LATCH connectors from storage slots under cover (see page 28).
- 2 Press and hold first LATCH adjuster button, then pull LATCH strap to full length. Repeat for remaining LATCH connector.
- 3 Place restraint sideways on vehicle seat, with back of restraint facing toward you.
 - *Restraint must be in full upright position when installed in forward-facing mode with children over 33 pounds (15 kg.).*
 - *Britax recommends use of Versa-Tether® to improve installation. Remove Versa-Tether from pouch and loosely attach to an approved tether-anchorage point (see page 24).*
- 4 Verify LATCH strap is not twisted, then attach closest LATCH connector to vehicle seat back to farthest LATCH anchor from you (fig. C).

NOTE: It may be necessary to switch LATCH connectors as shown on page 27 if **ANY** of the following conditions exist:

- LATCH connector is not in an upright position as shown in figure B.
- LATCH strap is twisted.
- A positive click is NOT heard when LATCH connector and LATCH anchor are connected.

- ✦ **NOTE:** If a positive click is not heard, but LATCH connector is in an upright position, you should not switch LATCH connector. The strap may be too tight or twisted, or there may be debris in LATCH connector.



- 5 Rotate seat into forward-facing position.
- 6 Verify LATCH strap is not twisted, then attach remaining LATCH connector to adjacent LATCH anchor (fig. D).
 - A positive click confirms attachment.
- 7 Kneel on child restraint to push it into vehicle seat while pulling each LATCH strap tight (fig. E).
- 8 Verify all connections and restraint are secure. The restraint is secure when it cannot be moved front-to-back or side-to-side more than 1" (2.5 cm.) at belt path. If restraint is not secure, repeat procedure or use an alternate seating location.
- 9 Remove slack from Versa-Tether and store excess webbing in tether pouch.



Removal

Disconnect Versa-Tether from tether anchor. While pushing restraint firmly into vehicle seat, press red release buttons on LATCH connectors to release. When not in use, always store LATCH connectors and Versa-Tether.

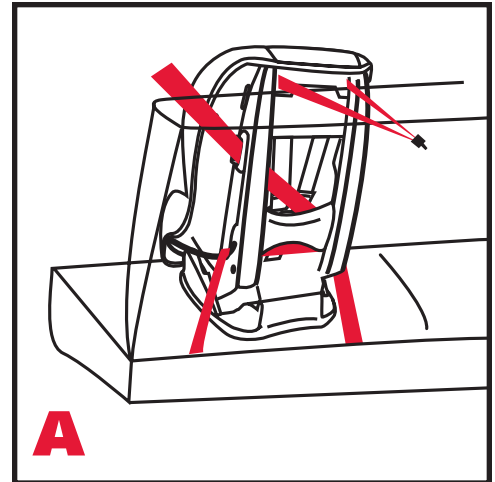


WARNING! Use vehicle belt (not LATCH connectors) for installations with children weighing more than 48 pounds (21 kg.). Refer to your vehicle's owner's manual or contact vehicle manufacturer for maximum weight rating for their LATCH anchors. Unless specified otherwise by vehicle manufacturer, assume a 48-pound child is vehicle LATCH anchor limit.

Installation: Forward Facing

Lap/Shoulder Belt Installation

- *Figure A illustrates a typical forward-facing lap/shoulder-belt installation.*
 - *When not in use, always store LATCH connectors in storage slots.*
- 1 Place child restraint forward facing on vehicle seat.
 - *Restraint must be in full upright position when installed in forward-facing mode with children over 33 pounds (15 kg.).*
 - *Britax recommends use of Versa-Tether® to improve installation. Remove Versa-Tether from pouch and loosely attach to an approved tether-anchorage point (pg. 24).*
 - 2 Pull vehicle belt out, then thread it **over** LATCH bar and through the forward-facing belt path (fig. B).
 - 3 Verify that vehicle belt is not twisted and is routed **over** LATCH bars, then buckle (fig. C).
 - 4 Rotate lever downward to open forward-facing lock-off farthest from where vehicle belt will be buckled.
 - 5 Remove slack from lap portion of vehicle belt.
 - 6 Kneel on child restraint to push it into vehicle seat while pulling shoulder portion of vehicle belt tightly through lock-off (fig. D).



- 7 Hold shoulder belt tight, then rotate lock-off upward until secured (fig. E).
 - *If your vehicle is equipped with an automatic locking retractor (ALR), use of lock-offs is not required as long as ALR is activated. Check your vehicle's owner's manual to determine type of retractor your vehicle has, and for proper use of retractor.*
- 8 Verify all connections are secure and restraint is stable. The restraint is secure when it cannot be moved front-to-back or side-to-side more than 1" (2.5 cm.) at belt path. If restraint is not secure, repeat procedure or use an alternate seating location.
- 9 Remove slack from Versa-Tether® and store excess webbing in tether pouch.



Removal

Disconnect Versa-Tether, if necessary. While pushing restraint firmly into vehicle seat, release lock-off and vehicle belt.

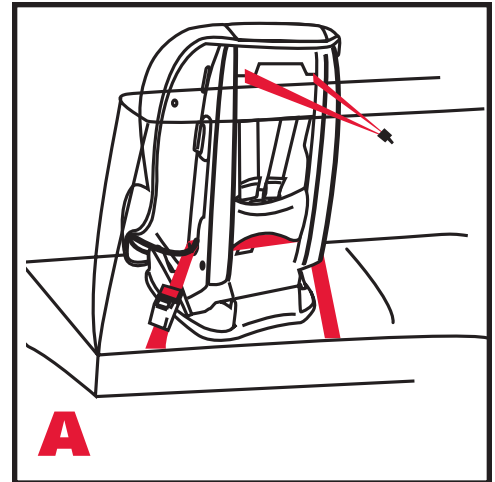
Installation: Forward Facing

Lap-Belt Installation

- Figure A illustrates a typical forward-facing, lap-belt installation.
- When not in use, always store LATCH connectors in storage slots.



WARNING! Do not install with non-locking (ELR) two-point vehicle belt.



- 1 Place child restraint forward facing on vehicle seat.
 - Restraint must be in full upright position when installed in forward-facing mode with children over 33 pounds (15 kg.).
 - Britax recommends use of Versa-Tether® to improve installation. Remove Versa-Tether from pouch and loosely attach to an approved tether-anchorage point (pg. 24).
- 2 Pull vehicle belt out, then pass it **under** LATCH bar, through forward-facing belt slots, then **under** LATCH bar on the other side (fig. A).
- 3 Verify vehicle belt is not twisted, is routed under LATCH bars, then buckle (fig. B).
- 4 Kneel on child restraint to push it into vehicle seat while removing slack from vehicle belt (fig. C).
- 5 Remove slack from Versa-Tether and store excess webbing in tether pouch.
- 6 Verify all connections are secure and that restraint is stable. The restraint is secure when it cannot be moved front to back or side to side more than 1" (2.5 cm.) at belt path. If restraint is not secure, repeat procedure or use an alternate seating location.



Safety Information



WARNING! The position of vehicle belt buckle can affect stability of the child restraint. In a crash, an improperly positioned buckle could become loose and the child would be unprotected.

When using restraint in forward-facing mode, attach Versa-Tether® only to tether anchors identified by vehicle manufacturer as tether-anchorage points. Use of other locations is not approved or permitted.

If a tether anchorage is not available, DO NOT modify vehicle without advice from vehicle manufacturer.

DO NOT hook Versa-Tether to bottom of a vehicle seat adjuster!

IMPORTANT:

- Britax recommends that tether be used at all times. Using tether will improve the stability of child restraint and reduce risk of injury.
- If vehicle does not currently have a tether anchor attachment, refer to your vehicle's owner's manual or contact vehicle manufacturer for assistance.
- The back angle of child restraint should not exceed 45° from vertical when properly installed in rear-facing position.

NOTE: It may be necessary to loosen tether and/or vehicle seat belt before adjusting recline position. Tether and/or vehicle seat belt must be properly re-tightened per the instructions in this manual.

Removal

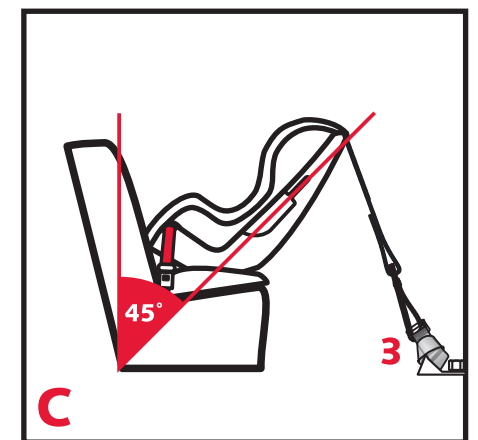
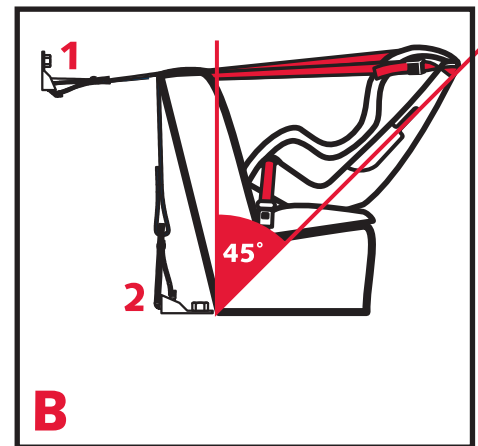
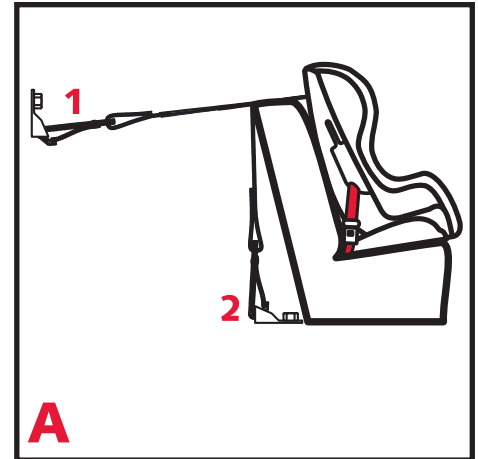
Disconnect Versa-Tether, if necessary. While pushing restraint firmly into vehicle seat, release lock-off and vehicle belt.

Using the Versa-Tether

- 1 Consult your vehicle's owner's manual for approved tether-anchorage locations.
- 2 Locate the tether on rear of restraint and place up and over seat back while securing restraint.
- 3 Secure child restraint by a seat-belt or LATCH system.
- 4 Press and hold tilt-lock adjuster, then pull to fully extend tether strap into a "V" shape.
- 5 Locate hook on strap and loosely attach tether to an approved anchor point.
 - See figure A for forward-facing installation.
 - See figures B and C for rear-facing installation.

NOTE: Rear-facing installation may also require use of Tether Connector Strap, as described on page 25.

- 6 Pull Versa-Tether strap to remove all slack. Roll up excess webbing and store in tether pouch.
- 7 Verify there is tension in Versa-Tether strap and that child restraint is properly secured. The restraint is secure when it cannot be moved front-to-back or side-to-side more than 1 inch (2.5 cm.) at belt path. If restraint is not secure, repeat procedure or use an alternate seating location.



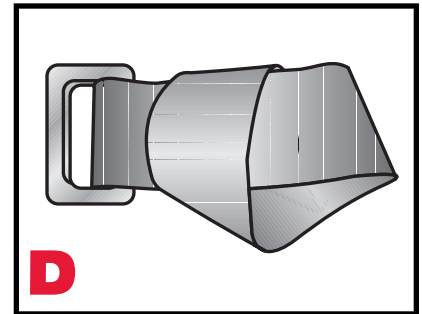
NOTE:

- The rear-facing recline angle of the child restraint should be 30°-45° from vertical (not to exceed 45° from vertical) when car is parked on a level
- The rear-facing recline angle can be adjusted by placing a rolled towel or pool noodle crease of the vehicle seat, and restraint can be stabilized by tightening tether as shown in figure C, using anchor point 3.
- It may be necessary to loosen tether and vehicle seat belt before adjusting recline position.

Rear-Facing Tether Connector Strap



WARNING! Only use tether connector strap for rear-facing tether installation.



Because every vehicle model is different, sometimes you cannot find a location to properly anchor the tether, or the structural part of seat is too large for the hook. Use rear-facing tether connector strap (fig. D) to assist in creating an anchor point.

- 1 Find a fixed vehicle seat belt anchor or vehicle seat leg (that is bolted to the floor) to which the strap can be wrapped around.
- 2 If you cannot find an acceptable location to create an anchor point, contact vehicle manufacturer to identify a suitable tether connection point.
- 3 Loop strap around metal anchor.
- 4 Take metal D-ring and thread it through webbing loop on other end of strap.
- 5 Pull metal D-ring all the way through until strap is tight around metal anchor.
- 6 Use D-ring as an attachment point for hook on tether strap.

Energy-Absorbing Tether



WARNING! The energy-absorbing tether has been designed to help indicate when child restraint has been in a severe crash and replacement of child restraint is necessary.



Figure A shows the tether when child restraint is acceptable for continued use (provided the restraint has not been involved in a crash). The colored stitching will be intact and webbing will be held under a tether label.



Figures B and C show examples of when child restraint is unacceptable for continued use. If tether label is torn, or if one or both of the loops have pulled through back side of shell and the colored stitching has ripped, child restraint is no longer acceptable for use. Discontinue use of child restraint and contact Britax Consumer Services for further instruction.



IMPORTANT: Regardless of whether loops have pulled through the back side of the shell and the colored stitching has been ripped, discontinue use of restraint if it has been involved in a moderate to severe crash.

Switching the LATCH Connector

LATCH connectors will properly connect with LATCH anchor in the vehicle only when connectors are correctly aligned and harness is not twisted.

To ensure LATCH connector is properly aligned with vehicle's LATCH anchor, the connector's red release button should face away from vehicle seat back, and the larger of the two connector sections is on top (fig. A).

If LATCH connector will not properly connect to LATCH anchor in the vehicle, LATCH straps are twisted, or a positive click is not heard, connectors must be switched from one side to the other. This will ensure that connectors are correctly aligned.

- 1 Lift front of cover to access LATCH connector.
- 2 Slide both connectors through rear-facing belt slots to center of restraint so both connectors are on the front side of restraint (fig. B).
- 3 Loosen loop on one connector (fig. C).
- 4 Thread the other connector through loop created in step 3 to switch positions (fig. D).
- 5 Slide each connector through the appropriate rear-facing belt slot to opposite side of restraint.
- 6 Replace cover and continue with installation procedure.



Restraint Functions

Storing the LATCH Connector

When LATCH connector is not in use, lift cover to access LATCH storage slots (fig. E). Fold LATCH adjuster and connector, then slide each set into the adjacent slot.

NOTE: Restraints are shipped from Britax with LATCH connectors in the storage slots.



Recline Adjustment

Pull recline handle (fig. F) then slide restraint shell into desired position. Release recline handle, then verify the child restraint has locked into position.

IMPORTANT: Restraint must be in the full upright position when installed in forward-facing mode with children over 33 pounds (15 kg.).



Infant Body Pillow

The Infant Body Pillow is designed to provide better fit and comfort for infants using this restraint. For additional side support, fold side flaps, as shown below.



NOTE: Remove Infant Body Pillow after child can sit comfortably in restraint without additional support.

Chest Clip

Fastening the Chest Clip

Fasten chest clip by pushing the two halves together until a positive click is heard (fig. A).

Releasing the Chest Clip

- 1 Squeeze middle tabs together.
- 2 Pull the two pieces apart (fig. B).

Adjusting the Chest Clip

- 1 Slide chest clip up or down (fig. C) on harness so it is positioned at the middle of child's chest, level with child's armpits.
- 2 Slide HUGS™ pads and comfort pads to a comfortable location for child.

HUGS™ and Comfort Pads

IMPORTANT: HUGS™ (Harness Ultra Guard System) pads must be installed for forward-facing use. Removal of HUGS is optional for rear-facing use.



Restraint Functions

Harness Buckle

Fastening the Harness Buckle

- 1 Hold harness buckle with one hand.
 - 2 Use other hand to insert one buckle tongue at a time into harness buckle (fig. D).
- *Proper connection is confirmed with a positive click after inserting second buckle tongue.*

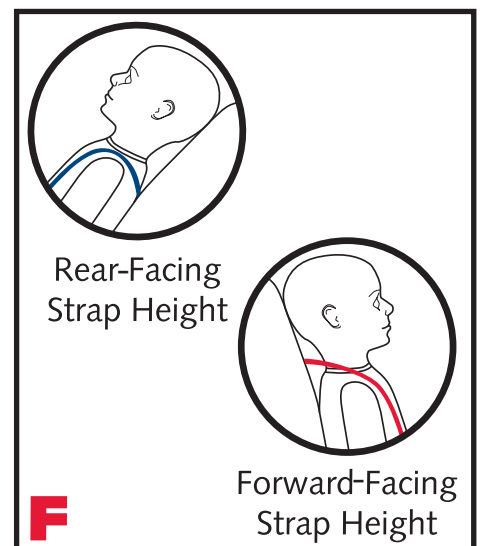
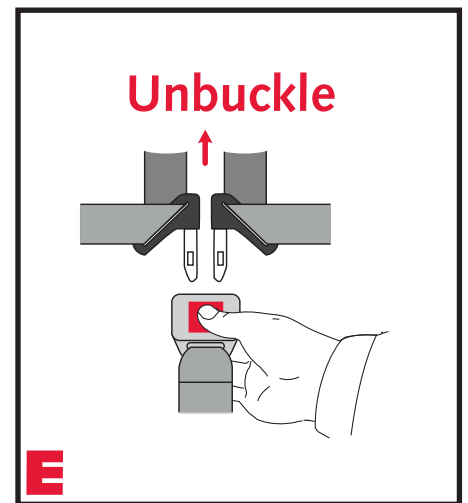
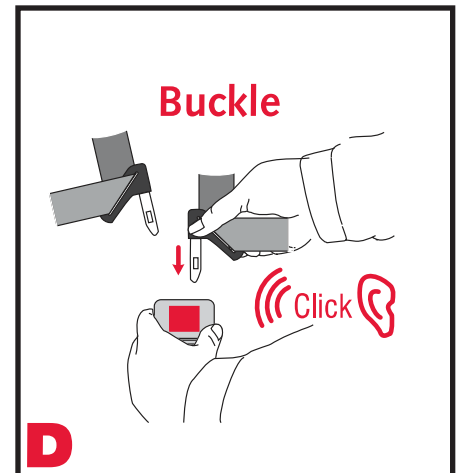
Releasing the Harness Buckle

- 1 Brace rear of harness buckle with one hand.
- 2 Use thumb to press release button until both tongues are ejected from harness buckle (fig. E).

IMPORTANT: *Periodically clean harness buckle to ensure safe operation (pg. 36).*

Harness Height

- 1 Place child in restraint then secure harness (see pages 31-32).
 - 2 Observe where shoulder harness is positioned on child.
- *Rear Facing: Harness straps should be located at or below top of child's shoulders (fig. F).*
 - *Forward Facing: Harness straps should be located at or above top of child's shoulders (fig. F)*
- 3 If harness height is okay, continue using child restraint without adjustment. If harness height requires adjustment, see "Harness Height Adjustment" (pg. 31).



Securing Your Child

Once child restraint has been installed in the vehicle and adjustments have been made, follow these instructions to secure child.

- 1 Loosen harness by lifting harness adjuster lever located on front of restraint while pulling shoulder straps forward (fig. A).
- 2 Release chest clip by squeezing tabs and sliding pieces apart (fig. B).
- 3 Unfasten harness buckle by pressing release button and sliding tongues out.
- 4 Move harness straps to the side of restraint.
 - *Use harness holder located on straps and side of cover to aid in holding straps.*
- 5 Place child in restraint.
- 6 Position harness straps around child and fasten harness buckle (fig. C) and chest clip.
- *Proper connection of harness buckle is confirmed with a positive click after inserting second buckle tongue.*
- 7 Gently pull up on harness straps to tighten lap section of harness which should fit across child's upper thighs.
- 8 Slowly pull adjuster strap to tighten harness around the child (fig. D).
- 9 Position chest clip at middle of child's chest, level with child's armpits (fig. E).
- 10 Verify that harness is not twisted and child is properly secured.



IMPORTANT:

- Always pull on harness after securing child to make sure harness buckle and harness adjuster are secure. If not, harness buckle or adjuster area may be clogged with food, drink or other objects that need to be removed. See pages 34 and 36 for cleaning instructions.
- Adjust the belts provided with this child restraint so they fit snugly around your child. A snug strap should not allow any slack. It lies in a relatively straight line without sagging. It does not press on the child's flesh or push the child's body into an unnatural position.

Harness Height Adjustment

- 1 Loosen harness by lifting harness adjuster lever while pulling harness straps forward as far as possible.
- 2 Rotate head pad adjustment knob on either side of restraint to raise or lower headrest and harness (fig. F).

NOTE: DO NOT force head pad adjustment knob in either direction. If the knob is difficult to turn, head pad may be at maximum or minimum height.

- Before each use, make sure harness is tight.
- See "Harness Height" (pg. 30) to determine correct harness height for your child.



Cover Removal



WARNING! Do not take apart or attempt to take apart the harness. It is unnecessary and dangerous to do so.

Never remove the buckle tongues from the harness. They cannot be reattached after removal.

- 1 Remove infant body pillow.
- 2 Loosen harness by lifting harness adjuster lever while pulling shoulder straps forward as far as possible.
- 3 Unhook shoulder straps from yoke on rear of child restraint.
- 4 Pull upper harness straps through head pad and cover to front of restraint.
- 5 Remove buckle and belly pad (pg. 35).
- 6 Gently remove head pad cover. Be careful not to damage the energy-absorbing foam.
- 7 Remove upper portion of cover.
- 8 Pull lower harness straps, buckle tongues, HUGS™ pads, and chest clip through lower slots in cover.
- 9 Remove entire cover from restraint.

Refitting the Cover

To refit the cover, reverse above directions. Make sure that the shoulder straps are threaded through the chest clips and that the harness is not twisted.

Care and Maintenance

Cleaning the Cover and Pillows

- **HAND WASH** using cold water and mild soap.
- **LINE** or **LIE-FLAT DRY** to prevent cover from shrinking.
- **DO NOT** bleach, machine wash, machine dry or iron.

Cleaning the Shell

- **SPONGE CLEAN** using warm water and mild soap.
- **TOWEL DRY**
- **DO NOT** use solvents, abrasive cleaners or disassemble the harness.

Cleaning the Harness

- **SPONGE CLEAN** using warm water and mild soap.
- **TOWEL DRY**
- **DO NOT** bleach, machine wash, machine dry or disassemble the harness.

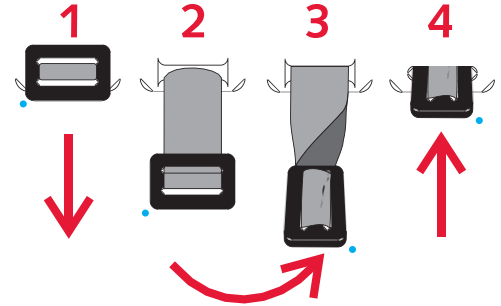
Cleaning the Harness Adjuster

Periodically check the adjuster area to be sure it is clean and free of food, coins, dirt and other objects. If debris is present, it must be removed to prevent interference with the adjuster mechanism.

- **BRUSH AWAY LOOSE DEBRIS** using a soft-bristled brush.
- **SPONGE CLEAN** using warm water and mild soap.
- **TOWEL DRY**
- **DO NOT** use solvents, abrasive cleaners or disassemble the harness.

Harness Buckle Removal

- 1 Fully recline the child restraint.
- 2 Locate the metal-buckle strap retainer on bottom of the restraint.
- 3 Pull retainer away from child restraint to loosen.
- 4 Turn the retainer so the short side will go through the slot in restraint shell.
- 5 Push the retainer through slots in the shell and cover, to the top of the restraint.



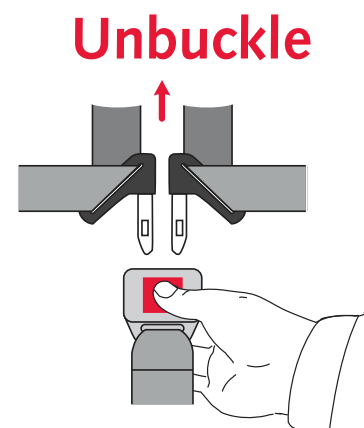
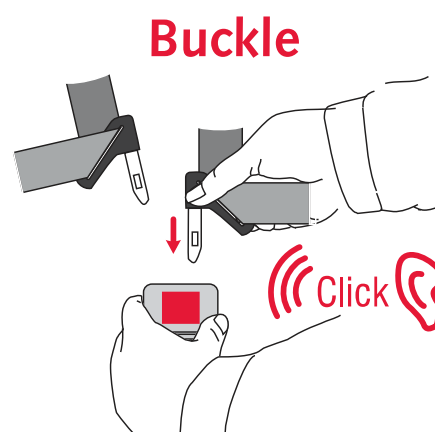
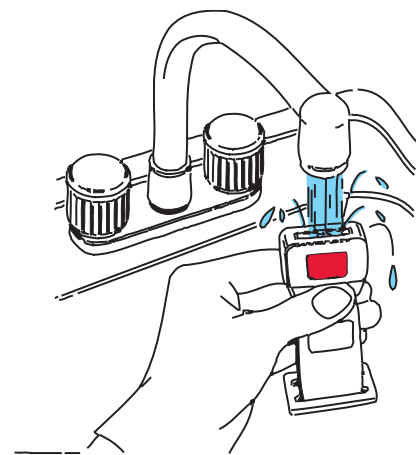
Rethreading the Harness Buckle

- 1 Locate slot in cover and shell for harness buckle.
- 2 Turn the buckle retainer so the short side will go through the slot in the cover and restraint shell.
- 3 Pull harness buckle away from restraint until tight, then verify the strap is not twisted and the release button is facing outward.

Cleaning the Harness Buckle

If a child eats and drinks while in the restraint, the harness buckle may need to be periodically checked and cleaned of any accumulated debris or dried liquids.

- **REMOVE BUCKLE** as described on page 35.
- **THOROUGHLY RINSE** using warm water.
- **TEST THE HARNESS BUCKLE** by fastening and unfastening until a positive click is heard after inserting the second buckle tongue. If click is not heard, repeat cleaning procedure.
- **TOWEL DRY**
- **DO NOT** lubricate, use solvents, abrasive cleaners, soap or other household detergents.



This child restraint was manufactured by Britax Child Safety, Inc. (Britax®). Britax warrants this product to the original retail purchaser as follows:

LIMITED ONE-YEAR WARRANTY

This product is warranted against defective materials or workmanship for one year from the date of original purchase. Proof of purchase is required. The exclusive remedy for this warranty is that Britax will, at its option, provide repair or replacement components for this product or refund the original purchase price of the product. Britax reserves the right to discontinue or change fabrics, parts, models or products, or to make substitutions.

To make a claim under this warranty, contact Britax Consumer Services at 1-888-427-4829 or write to us using the address on the back cover of this booklet. Proof of purchase is required.

PLEASE COMPLETE AND MAIL THE OWNER REGISTRATION CARD WITHIN (30) DAYS OF PURCHASE.

WARRANTY LIMITATIONS

This warranty does not include damages which arise from negligence, misuse or use not in accordance with the product instruction.

The use of non-Britax covers, inserts, toys, accessories, or tightening devices is not approved by Britax. Their use could cause this restraint to fail Federal Safety Standards or perform worse in a crash. Their use automatically voids the Britax warranty.

LIMITATION OF DAMAGES

The warranty and remedies as set forth above are exclusive and in lieu of all others, oral or written, express or implied. In no event will Britax, or the retailer selling this product, be liable for any damages, including incidental or consequential damages, arising out of the use or inability to use this product.

LIMITATIONS OF WARRANTIES AND OTHER WARRANTY TERMS AND STATE LAWS

Any implied warranties, including implied warranties of merchantability and fitness for a particular purpose, shall be limited to the duration and terms of the express written warranty. Some states do not allow limitations on how long an implied warranty lasts or the exclusion or limitation of incidental or consequential damages, so the above limitations may not apply. This warranty gives you specific legal rights, and you may have other rights, which vary from state to state. Neither Britax, nor the retailer selling this product, authorizes any person to create for it any other warranty, obligation, or liability in connection with this product.



First class travel for children

Britax Child Safety, Inc.
13501 South Ridge Drive
Charlotte, NC 28273
USA

A **Britax Childcare** company

Tel: 704-409-1700

BritaxUSA.com

